

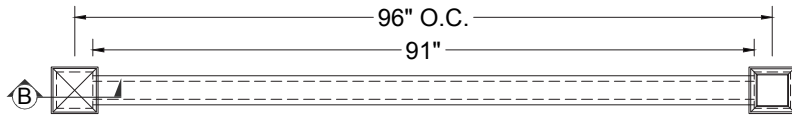
# Trex® Seclusions® Composite Fencing

SRF Fence & Supply Co.

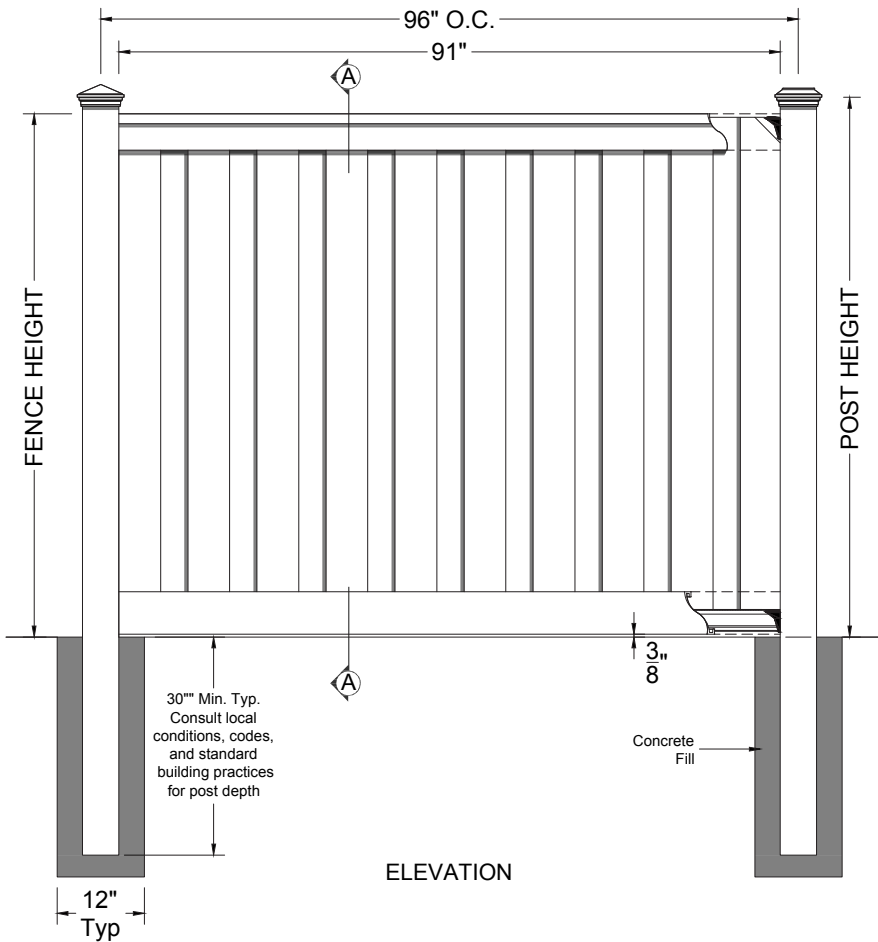
**Trex®**  
Fence Distribution

Trex Company National Distribution Partner

ARCHITECTURAL DRAWING:  
TREX SECLUSIONS FENCING  
PROFILE VIEW



PLAN

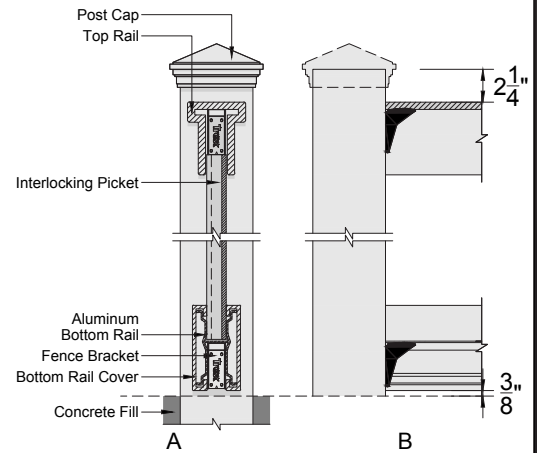


ELEVATION

## BILL OF MATERIAL FOR A 6'H x 8'W SECTION OF SECLUSIONS FENCINGS

C	NTS	QUANTITY	LENGTH
	Post Cap: Pyramid, Flat	1	
	5" x 5" Post	1	106" *
	4" x 4.9" Top Rail	1	91" *
	1"x5.75" Interlocking Picket	19	67" *
	1" x 5.75" Bottom Rail Cover	2	91" *
	Aluminum Bottom Rail	1	90 1/2"
	Fence Bracket	4	
	1 5/8" (Typ) Exterior Wood Screws	24	

\* Length may vary



SECTIONS

### NOTES:

1. INSTALLATION TO BE COMPLETED PER MANUFACTURER'S SPECIFICATION.
2. THIS DRAWING IS PROVIDED FOR PLANNING PURPOSES. REFER TO MANUFACTURER'S INSTALLATIONS FOR CONSTRUCTION DETAILS.
3. REFER TO MANUFACTURER'S WEBSITE FOR PRODUCT INFORMATION.
4. DRAWING NOT TO SCALE.

## TREX SECLUSIONS FENCING PROFILE VIEW

[www.trexfencingsrf.com](http://www.trexfencingsrf.com)

SRF Fence & Supply Co.

**Trex®**  
Fence Distribution

855.620.TREX (8739)  
SRF Fence & Supply Co.  
1745 Shea Center Dr., Ste. 370  
Highlands Ranch, CO 80129

Trex®, the Trex® logo, and Trex Seclusions® are either federally registered trademarks, trademarks or trade dress of Trex Company, Inc., Winchester, Virginia or its licensees.